

Science Photography Competition Entry Guidelines

Submit between three and six photographs which record some scientific event or illustrate some scientific phenomenon. The photographs must be linked by a common theme. Prints of the photographs must be submitted.

Your topic may be based on any scientific theme or you may use the theme for this year which is *Innovation: Powering Future Industries*. Prints that indicate cruel or dangerous procedures have been used, will not be judged.

Who can enter?

There are three age categories:

Junior – Years 5 – 6

Inter – Years 7 – 9

Senior – Years 10 – 12

What do I need to submit?

The photography contest is limited to **one** submission per entrant. A valid submission will contain the following in a document wallet with the entry form attached to the back.

1. Prints

- 3-6 photo prints printed separately and no bigger than A4 size. Prints on paper will be accepted, or prints could be mounted onto heavier card.
- Each print must include:
 - Title
 - A caption that explains the scientific relevance of the print in 1-2 sentences
 - The student's name and year level
- Photographs must be taken by the entrant using a traditional or digital camera (with traditional photography students are not required to develop their own photos). Any enhancements to photographs either digital or traditional must be done by the student. Images cannot be taken from other print or electronic sources.

2. Original images

- Digital Photography: all original, unaltered images must also be provided on ONE separate A4 sheet of paper as part of the explanation of the process undertaken, regardless of whether you altered the final images.

- Traditional Photography: the negatives must be supplied (attached to one A4 sheet of paper).

How should I submit my prints and entry form?

Prints and entry forms must be submitted in a document wallet with the entry form attached to the back. The document wallet can be handed to the student office on any campus or your science teacher.

When is the deadline?

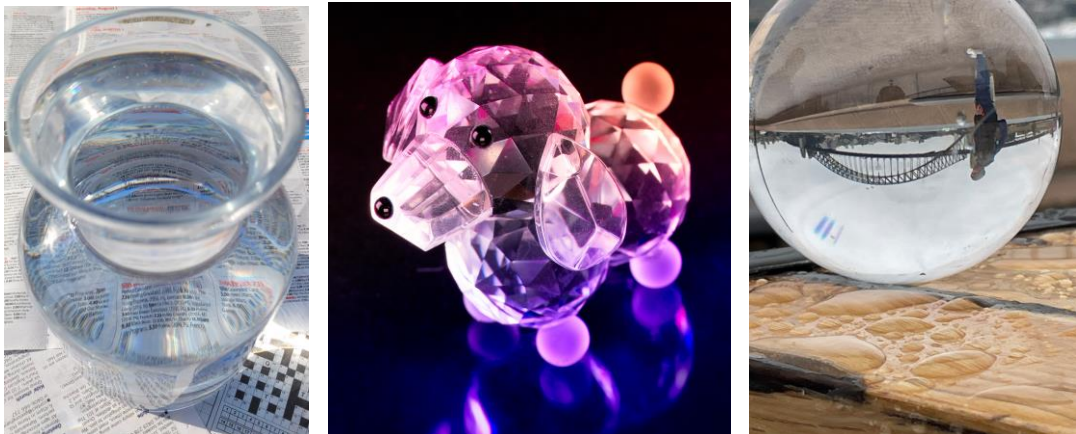
All eligible submissions must be handed in by 5pm Friday 11th August to your science teacher or student office on your campus.

How will the photographs be judged?

The photographs will be judged by a panel of science teachers on creativity and clarity and relevance to the chosen scientific topic.

What are the prizes?

The selected entry in each category will win a science-themed book. The winner's and finalists' names and entries will be posted in the Vine newsletter.



2022 winning entries using the theme Glass: More than meets the eye